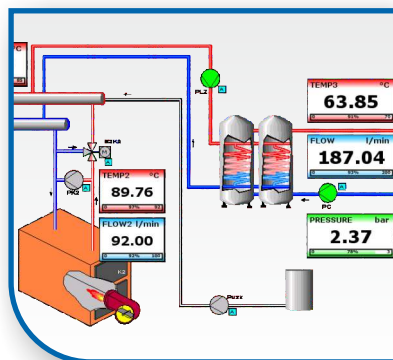




# SIMCORDER SOFT

Data Visualization Tool



Measure,  
**Control** and Log Data



# SimCorder – what is it?

**SimCorder Soft** is a visualisation application created to facilitate work with advanced networks of the SIMEX devices. Acquisition, archiving, visualisation, reporting and exporting measurement data from all network devices is now very simple - all you need is one computer station. You can download measurements from the devices automatically or on demand. There is a possibility of immediate notification about emergency states via SMS or e-mail, which will often allow to quickly resolve an arising problem while avoiding long and expensive stoppages. Additionally, you can view the measurement data, emergency states and configuration via the internet. We believe that **SimCorder Soft** will become a helpful tool making your work easier.

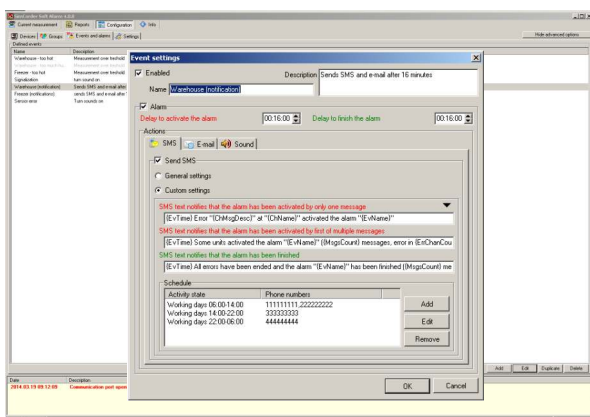
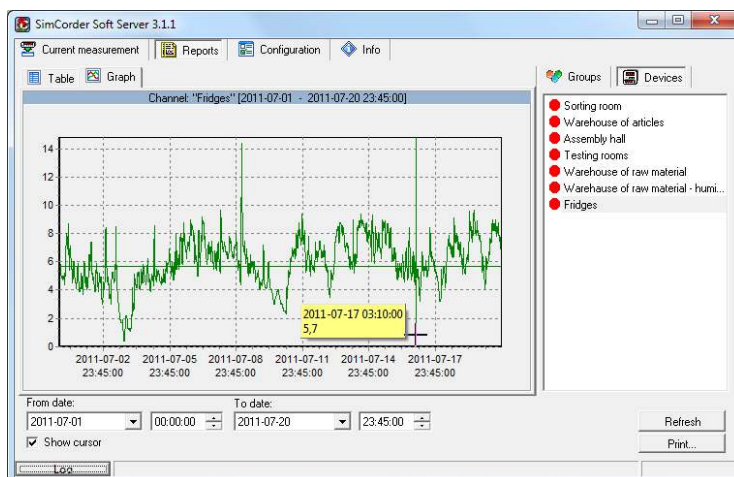


## Recording data from distributed measuring and control systems

SimCorder which uses the ModBus RTU protocol as a supervisory application, downloads measurement data and saves it on the hard drive in the form of a database file.

## Measurement presentation in tables, diagrams or visualisation windows

In order to simplify the analysis of the industrial process parameters, the operator has the possibility of preparing a visualisation of the data in a table or as a graphic where the application is presented using symbols.



## Viewing critical situations and errors

The alarm system is a necessary component of each visualisation application. Fast response of the operator and automatic launch of emergency procedures both aid in restoring the system to its nominal operation. The advanced modules which manage the method of notifying about emergency situations make it easier to set the priorities of event management.

# Software capabilities

## Comprehensiveness

Configuring devices, analysing measurement data, monitoring and supervising the entire visualisation system - everything available at one station.



## Alarms

Receive text message alerts and e-mails about emergency situations. Select who and when will receive such alerts. Set sound and visual alerts on the devices so that a particular response of the selected signalling modules is evoked for particular events.



## semiSCADA

Monitoring current measurements in a transparent graphical method with the possibility of immediate evaluation and response to the process status.



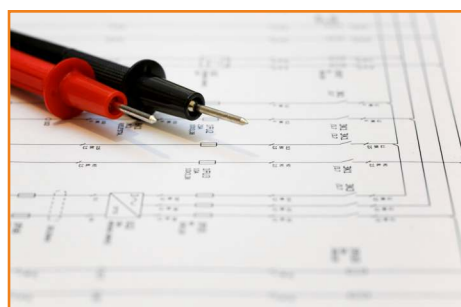
## On-line

Downloading measurement data as well as monitoring emergency states and configuration of the system via the internet.



## Measurements

The downloaded data can be archived and visualised as tables and diagrams; possibility of printing reports for registration purposes; exporting data to a text or CSV file.



## Installation of the network of devices

Convenient configuration of the network of devices by means of two methods: network scanning or automatic detection of devices.



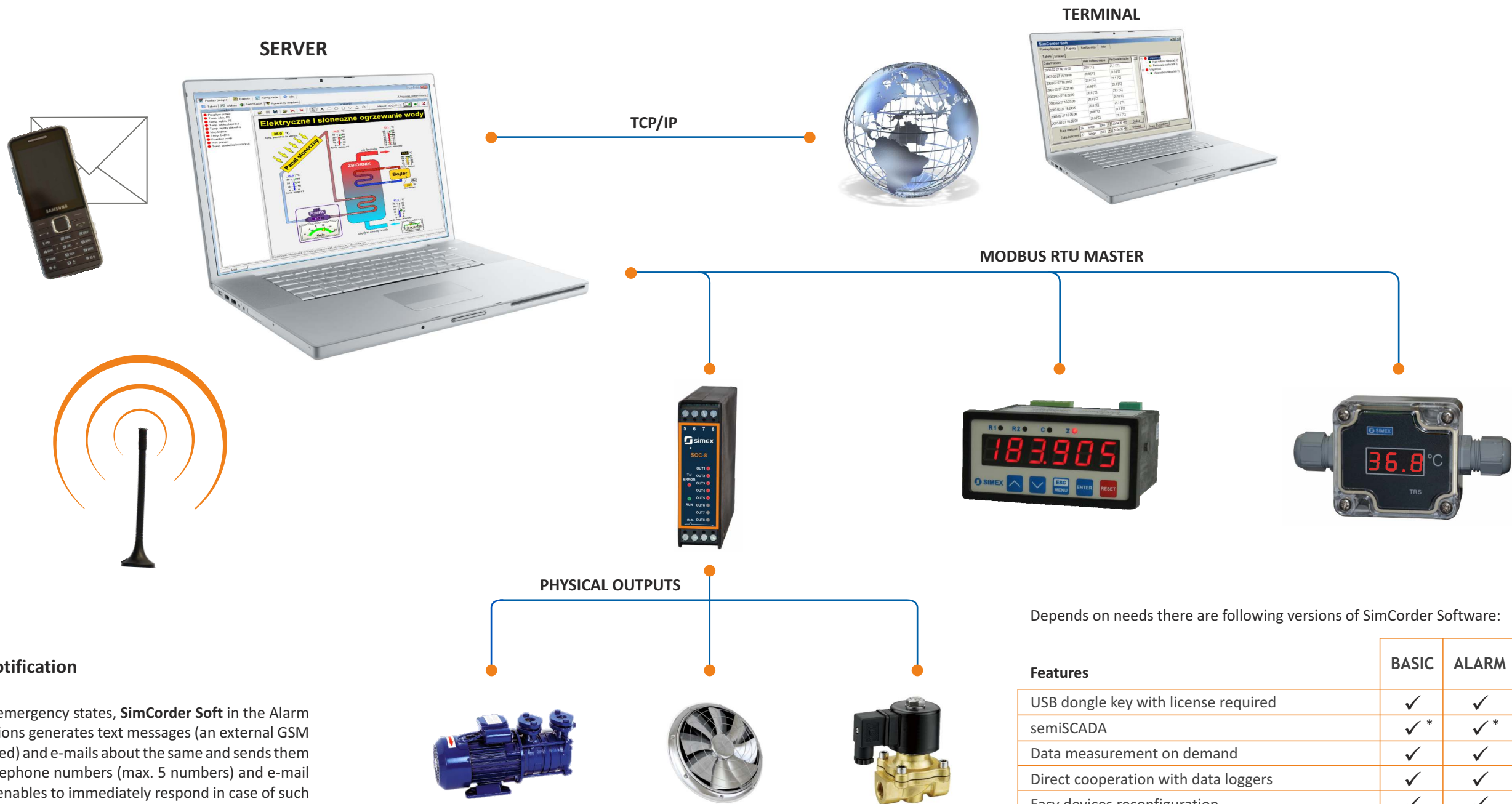


# Remote cooperation with the system

**SimCorder Soft** communicates with external devices using the RS-485 interface with the Modbus RTU protocol and reads measurement data from the above devices. A computer may be connected directly to the network of devices or via the internet. In case of the latter, an RS-485 Ethernet converter is necessary. This software enables sound and visual alerts (e.g. in case the temperature is too high in the cooler, excessive humidity, insufficient flow etc.). The system can be configured so that each alert evokes a particular response of selected signalling modules including TRS-B1 or SOC-8 manufactured by SIMEX. Any changes in the device settings as well as reading of measurements is completed remotely at one station.

## Monitoring from anywhere

A computer with **SimCorder Soft** installed in the **Network SERVER** version may share recorded data and system information such as emergency states via the internet. The data can be viewed as tables or diagrams or exported to various file formats on a computer with the **Network TERMINAL** version installed. The **Network TERMINAL** version also allows to print reports based on the above data. An insight into the entire system is possible from anywhere and at any time.



## Immediate notification

After detecting emergency states, **SimCorder Soft** in the Alarm or Network versions generates text messages (an external GSM modem is required) and e-mails about the same and sends them to applicable telephone numbers (max. 5 numbers) and e-mail addresses. This enables to immediately respond in case of such situations as system failure or exceeding the permissible measuring parameters.

Depends on needs there are following versions of SimCorder Software:

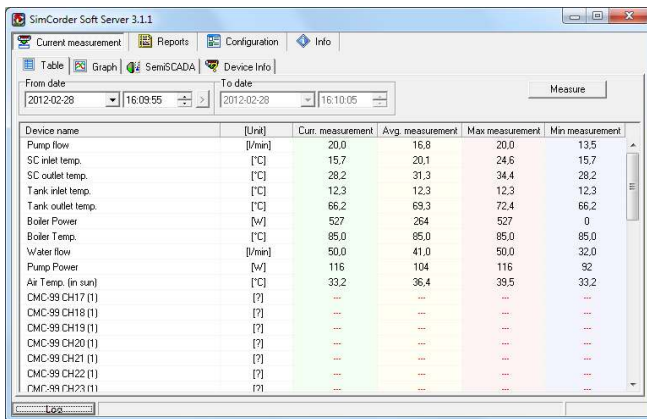
Features	BASIC	ALARM	NETWORK	
			SERVER	TERMINAL
USB dongle key with license required	✓	✓	✓	
semiSCADA	✓*	✓*	✓*	
Data measurement on demand	✓	✓	✓	
Direct cooperation with data loggers	✓	✓	✓	
Easy devices reconfiguration	✓	✓	✓	
Alarm state signalization	✓	✓	✓	✓
Alarm forwarding to external devices		✓	✓	
GSM and e-mail notification		✓	✓	
Remote network			✓	✓

\* functionality resulting from the license

# Displaying modes

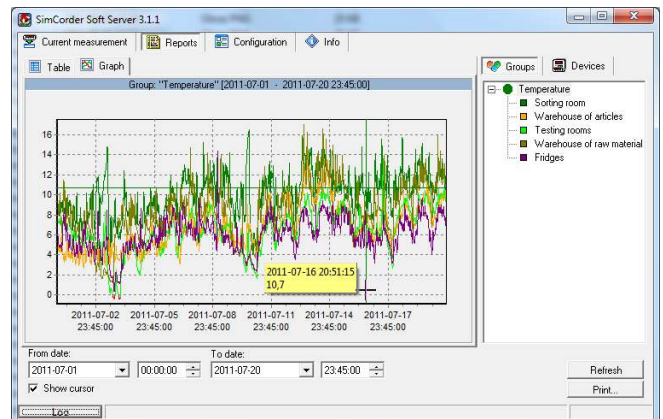
## Current measurements displayed as tables and diagrams

For quick and transparent analysis, two basic display modes of measuring states are used: tables or diagrams with the possibility of notifying about extraordinary situations and errors occurring in the measuring system.



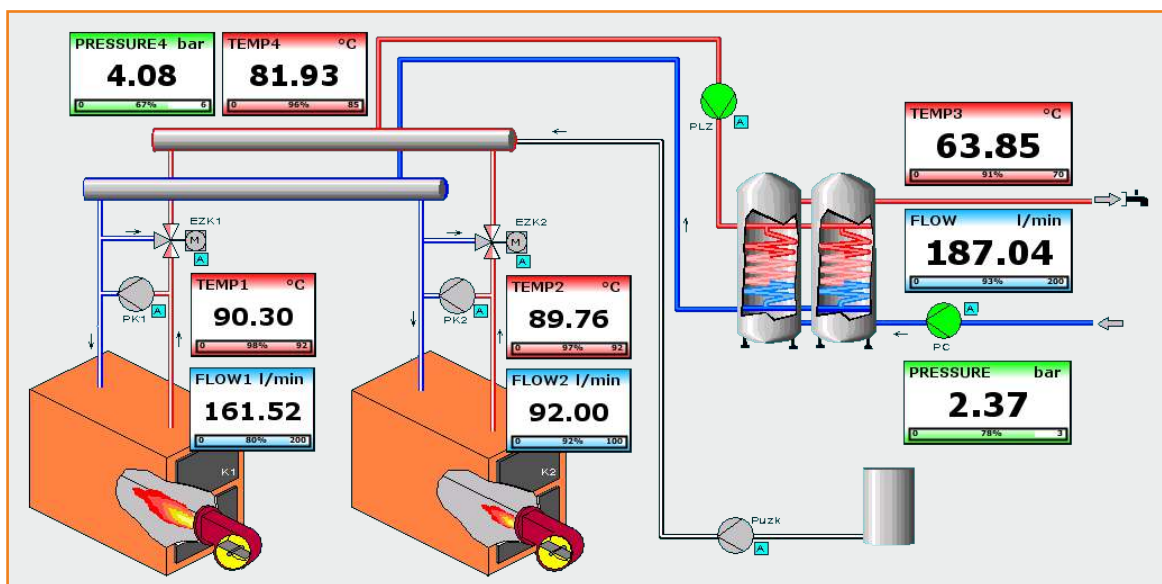
The screenshot shows the 'Table' view of the SimCorder Soft Server 3.1.1. It displays a table with columns for Device name, Unit, Current measurement, Average measurement, Maximum measurement, and Minimum measurement. The data is organized into a table with 6 columns and 15 rows.

Device name	[Unit]	Cur. measurement	Avg. measurement	Max measurement	Min measurement
Pump flow	[l/min]	20.0	16.8	20.0	13.5
SC inlet temp.	[°C]	15.7	20.1	24.6	15.7
SC outlet temp.	[°C]	28.2	31.3	34.4	28.2
Tank inlet temp.	[°C]	12.3	12.3	12.3	12.3
Tank outlet temp.	[°C]	66.2	69.3	72.4	66.2
Boiler Temp.	[°C]	527	264	527	0
Boiler Temp.	[°C]	85.0	85.0	85.0	85.0
Water flow	[l/min]	50.0	41.0	50.0	32.0
Pump Power	[W]	116	104	116	92
Air Temp. (in sun)	[°C]	33.2	36.4	39.5	33.2
DMC-99 CH17 (I)	[°]	---	---	---	---
DMC-99 CH18 (I)	[°]	---	---	---	---
DMC-99 CH19 (I)	[°]	---	---	---	---
DMC-99 CH20 (I)	[°]	---	---	---	---
DMC-99 CH21 (I)	[°]	---	---	---	---
DMC-99 CH22 (I)	[°]	---	---	---	---
DMC-99 CH23 (I)	[°]	---	---	---	---



## semiSCADA

**semiSCADA** is a component of **SimCorder Soft** used for graphical presentation of current analogue measurements which enables to evaluate the nature of signal changes. Thanks to the user friendly editor, it is possible to quickly “draw” the system. Various types of indicators and objects are available which can be located on a plan in order to transparently present the state of the monitored space and observe the dynamic values of measurements at particular stages of the process.



# Available software versions

In order to satisfy the needs of our customers, the software is available in a number of versions which offer different possibilities and features. Versions for one station as well as network applications with built-in alarm modules and advanced visualisation features are available. The flexibility of such a solution simplifies matching of the application to the specific expectations of the customer. The license keys are an element which makes expansion of the software with additional features a lot easier. If the user decides to make any changes to the software, they only have to pay for the additional features.

## IN SIMCORDER SOFT OFFER THERE ARE FOLLOWING LICENSES:

- SB** SimCorder Soft Basic USB License Dongle
- SBS** SimCorder Soft Basic & semiSCADA USB License Dongle
- SA** SimCorder Soft Alarm (software with SMS and e-mail alarm functions) USB License Dongle
- SAS** SimCorder Soft Alarm (software with SMS and e-mail alarm functions) & semiSCADA USB License Dongle
- SN3** SimCorder Soft Network (licence for 3 PC stations) USB License Dongle
- SNS3** SimCorder Soft Network (licence for 3 PC stations) & semiSCADA USB License Dongle
- SN10** SimCorder Soft Network (licence for 10 PC stations) USB License Dongle
- SNS10** SimCorder Soft Network (licence for 10 PC stations) & semiSCADA USB License Dongle

## Accessories

### GSM modems

The offered **GSM modems** are necessary accessories for the **SimCorder ALARM** and **NETWORK** software versions. Their purposes is to notify the user via SMS about emergency situations. They are equipped with two communication ports: RS-232 and USB which are used for connection with a computer. Configuration of the device from the SimCorder is simple and limited to a minimum - that is why each of the users can complete it on their own.



### Communication converters

The RS-485 and RS-232 Ethernet network converters enable to develop advanced communication systems using the existing cabling infrastructure of the customer. They enable a connection of the devices operating in the RS-485 network with a computer using LAN, limit the length of cables necessary for connection and thus lower the cost of installation and expansion of measuring systems. They also provide remote access to measurement networks via the internet.

Possible configurations of the converters:

**RS-485-> LAN -> PC,      RS-485-> LAN-> RS-485,      RS-232-> LAN-> PC**



### SimCorder Soft CD Box

**SimCorder Soft** on a CD in original packaging.

The software can also be downloaded free of charge at [www.simex.pl](http://www.simex.pl). Full functionality of a given software version will be possible after using the license key provided with the purchased license.





SIMEX Ltd.  
Wielopole 11  
80-556 Gdańsk  
Poland  
tel. (+48) 58 762-07-77  
fax (+48) 58 762-07-70  
e-mail: [info@simex.pl](mailto:info@simex.pl)  
[www.simex.pl](http://www.simex.pl)



[www.simex.pl](http://www.simex.pl)